

PRESSURIZED CIRCULATED STUFFING BOX

▶ THE SURFACE SEALING UNIT FOR
YOUR PCP OPERATIONS

DRIVEHEAD SEALING

PCM and subsidiary AMIK Oilfield Equipment & Rentals offer solutions for clean production with the development of a hydraulic pressurized environmental stuffing box conceived for your PCP operations.

Available for **cold production or thermal recovery**, this innovative sealing unit prevents your progressing cavity pump surface unit from any environment pollution.

▶ KEY FEATURES AND BENEFITS

- Oil circulated stuffing box
- Cooling down seal
- Pressure barrier
- Retrofit or integral version
- High temperature version
- Maintenance free



▶ PRESSURIZED CIRCULATED STUFFING BOX - ARTIFICIAL LIFT SYSTEM



▶ INNOVATION FOR ENVIRONMENT

- Environment friendly pressurize sealing unit
- Fit most drivehead as retrofit or integral
- Lubricate packing with constant feed of hydraulic oil
- Hydraulic pressure maintained on packings to override flow line pressure
- Circulating hydraulic oil used to cool down stuffing box packings and bearings
- Maintenance free sealing unit

▶ FIRST CLASS SERVICE

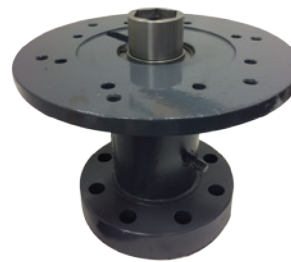
- PCM / AMIK Service team available worldwide to support customer
- Dedicated PCP team will support customer regarding any queries or issues faced with our PCM Drivehead

▶ SPECIFICATIONS

	COLD PRODUCTION	THERMAL RECOVERY (AMPCP)
Max temperature	250°F / 120°C	480°F / 250°C
Max static pressure	2 000 PSI / 140 bars	2 000 PSI / 140 bars
Max dynamic pressure	500 PSI / 35 bars	500 PSI / 35 bars
PR size	1 1/4" & 1 1/2"	1 1/4" & 1 1/2"
Ambient temperature	-40°F > 122°F / -40°C > +50°C	-40°F > 122°F / -40°C > +50°C



BOOTH version



INTEGRAL version

